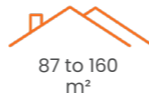


NEW

ODÉLYA RABAISSÉ



IDEAL FOR REFITTING AN OLD FIREPLACE, MAKING IT MORE MODERN AND INCREASING ITS HEATING CAPACITY.

HORIZONTAL CAST IRON STOVES

SUPRA.



	POWER 8.7 kW	 50cm (55 cm MAX.)	AIRTIGHT AND CONNECTIBLE	CONNECTED TO OUTSIDE AIR (in diameter) 100 mm
--	------------------------	--------------------------	---------------------------------	--

COMBUSTION AND MATERIALS

- **Dual combustion** for more efficient and cleaner combustion (minimum CO and dust content)
- **Vermiculite sides** for improved combustion
- **Made of high quality** lamellar graphite cast iron
- **Double wall cast iron** for extra strength
- **Removable** cast iron grating
- High-strength **ceramic glass**

INSTALLATION AND USE

- Back or top **flue connection** (150 mm)
- **Connectable to outside air** for more comfort (100 mm)
- **Rear protection** to protect any nearby installations
- **Adjustable base** for levelling
- **Adjustable flame intensity**
- **"Clean glass" system**
- **Large diagonal flame** view 60 cm (24 inches)
- Removable **large capacity ashtray**
- **Dual adjustable air inlet system** (independent of each other).
The modification of the secondary air intake **contributes to better combustion** as it burns the unburned gases from the

PRODUCT PERFORMANCE

Nominal power	8.7 kW
Power range	6 to 16 kW
Efficiency	77%
Seasonal efficiency	67%
CO (13 % O ₂) (mg/Nm ³)	0.08/1050
Nominal load	2.86 kg/h
Dust (mg/Nm ³)	40
NOx (mg/Nm ³)	130
VOC (OGC) (mg/Nm ³)	55
Mean flue gas temperature	301 °C
Flue gas mass flow	8.92 g/s
Nozzle depression (nominal)	12 Pa
CO ₂ emissions	9.4 %
Dual combustion	Yes
Airtight	Yes
ECODESING 2022	Yes

PRODUCT INFORMATION

EAN Code:	376 007 541 337 8
Product code	FR9016160B
Main material	Cast iron
View of the fire (diagonal)	53 cm (21 inch)
Log size	50 cm (55 cm MAX.)
Gross weight	165 kg
Net weight	155 kg
Dimensions LxHxD	70 x 60 x 43.3 cm
Size of pack LxHxD	73 x 75 x 49.5 cm

INSTALLATION AND SIZING

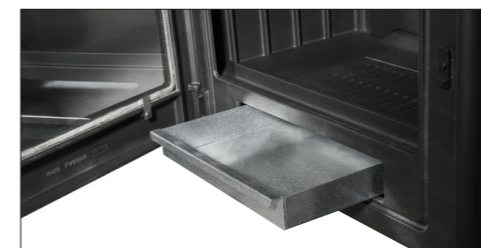
Diameter of flue gas nozzle	150mm
Flue gas connection	Back or above part
Flue collar	Male
Diameter connection to outside air	100 mm (back)
Back installation distance*	50cm
Lateral installation distance*	70cm

*Distance between the heater and combustible materials

PRODUCT PHOTOS



Adjustable base for perfect levelling.



Large capacity removable ashtray.

DIMENSIONAL PLAN

