

NEW

USKO RABAISSÉ



87 to 165
m²

SUPRO.

IDEAL FOR FITTING INTO OLD FIREPLACE.

HORIZONTAL CAST IRON STOVES



	POWER 8.7 kW	 50 cm (55 cm MAX.)	AIRTIGHT AND CONNECTIBLE	CONNECTED TO OUTSIDE AIR (in diameter) 100 mm
--	-----------------	---------------------------	-----------------------------	--

COMBUSTION AND MATERIALS

- Dual combustion for more efficient and cleaner combustion (minimum CO and dust content)
- Vermiculite sides for improved combustion
- Made of high quality lamellar graphite cast iron
- Double wall cast iron for extra strength
- Removable cast iron grating
- High-strength ceramic glass

INSTALLATION AND USE

- **Back or top** flue connection (150 mm)
- Rear protection to protect any nearby installations
- Adjustable flame intensity
- "Clean glass" system
- Large view of the fire diagonal 60 cm (24 inches)

PRODUCT PERFORMANCE	
Nominal power	8.7 kW
Power range	6 to 16 kW
Efficiency	77 %
Seasonal efficiency	67 %
CO (13 % O ₂) (mg/Nm ³)	0.08/1050
Nominal load	2.86 kg/h
Dust (mg/Nm ³)	40
NO _x (mg/Nm ³)	130
COV (OGC) (mg/Nm ³)	55
Mean flue gas temperature	301 °C
Flue gas mass flow	8.92 g/s
Nozzle depression (nominal)	12 Pa
CO ₂ emissions	9.4 %
Dual combustion	Yes
Airtight	Yes
ECODESIGN 2022	Yes

PRODUCT INFORMATION	
EAN Code:	376 007 541 317 0
Product code	FR9015960B
Main material	Cast iron
View of the fire (diagonal)	60 cm (23 inch)
Log size	50 cm (55 cm MAX.)
Gross weight	171 kg
Net Weight	152 kg
Dimensions LxHxD	70 x 60 x 43.3 cm
Packaging dimensions LxHxD	73 x 75 x 49.5 cm

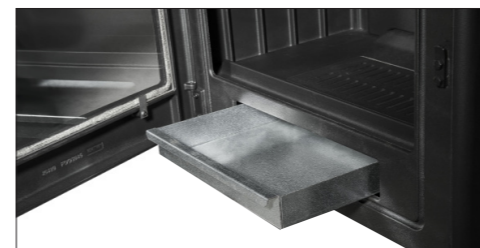
INSTALLATION AND SIZING	
Diameter of flue gas nozzle	150 mm
Flue gas connection	Back or above part
Flue collar	Male
Diameter connection to outside air	100 mm (back)
Back installation distance*	50 cm
Lateral installation distance*	70 cm

*Distance between the heater and combustible materials

PRODUCT PHOTOS



Adjustable legs for perfect levelling.



Large capacity removable ashtray.

DIMENSIONAL PLAN

